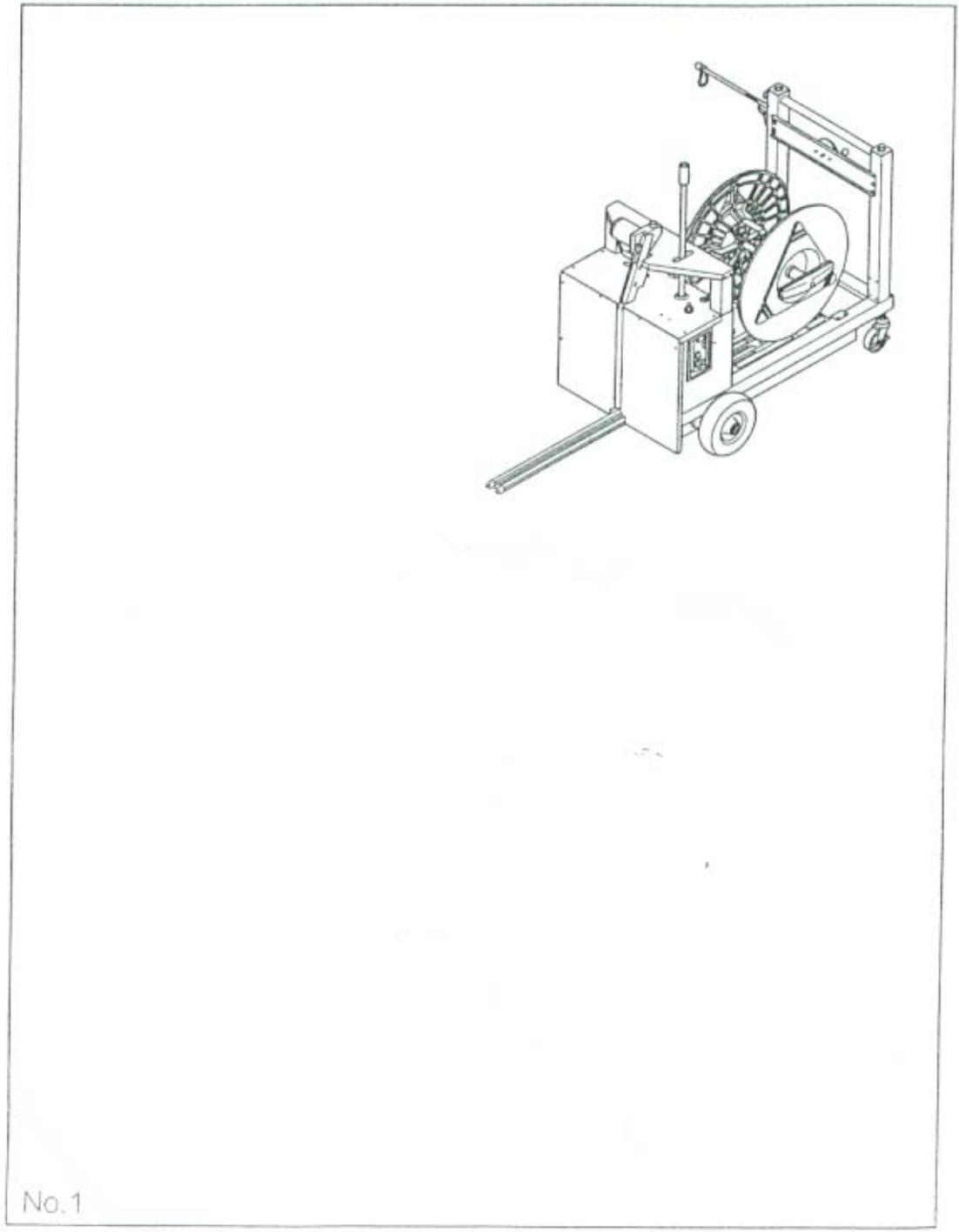


# StrapPack®

D-53PLT

PARTS LIST



# D-53PLT PARTS LIST

## INDEX

INFORMATION .....	1
SCREW etc. ....	2
SEALING UNIT-1 .....	3-4
SEALING UNIT-2 .....	5-6
BODY & REEL UNIT-1 .....	7-8
BODY & CONTROL UNIT-2 .....	9-10
BODY & BANDWAY UNIT-3 .....	11-12
QUICK FEEDER & OPERATION LEVER UNIT .....	13-14
WIRE HARNESS GROUP - EX Spec. ....	15
WIRE HARNESS GROUP - J Spec. ....	16

This parts list is inclusive. It contains all parts found in the STRAPACK model D-53PLT.

## ORDERING INFORMATION

When ordering from this booklet, please specify (1)PART NUMBER, (2)DESCRIPTION, and (3)Quantity, for each item. For the purpose of this listing, only those parts which are normally assembled are broken down into their component pieces.


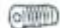










## EXPLANATION OF PART NUMBER

Parts number's having this configuration 123-45-67890, are exclusively STRAPACK parts, used only in STRAPACK strapping machines. Parts number's which look this 1234-567890, are assigned to commonly available parts not manufactured by our machine.

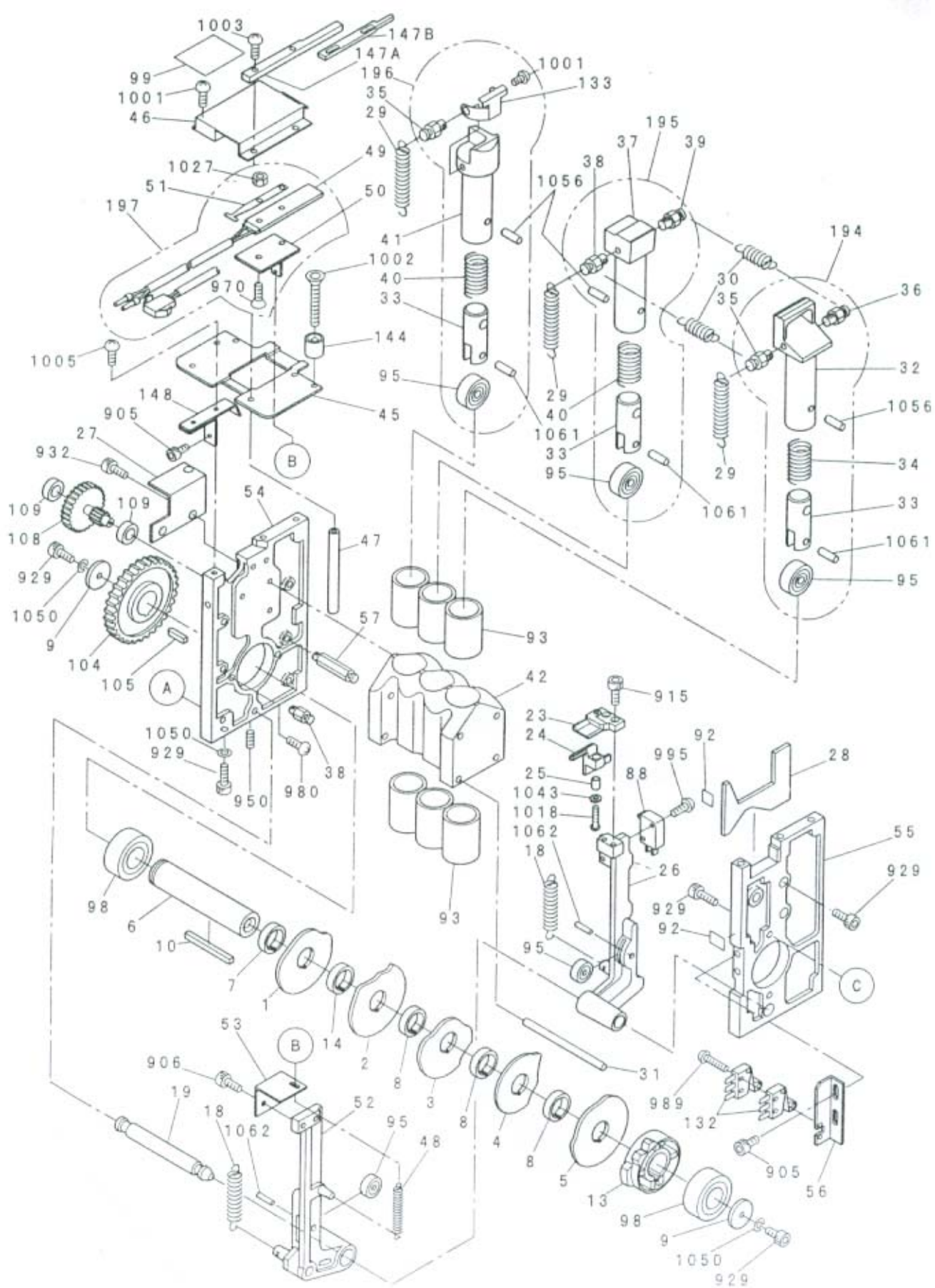
## CODING FOR NUTS, BOLTS, ETC.

This chart below explains the abbreviations used in this parts list for common nuts, bolts, etc..

This entries will also show dimensions in millimeters(diameter x length) where applicable. For example, a description such as "HSS,M5x10" refers to Hexagon Socket Set Screw, 5mm in diameter,

Abbreviation	Designation	Appearance	Abbreviation	Designation	Appearance
H B S	Hexagon Socket Head Cap Bolt		H S S	Hexagon Socket Set Screw	
F M S	Flat Head Screw		T M S	Truss Head Screw	
P M S	Pan Head Screw		H F S	Hex-Socket Flathead Screw	
H B	Hexagon Head Bolt		H N	Hexagon Nut	
PMS-S	Pan-Head Screw & Spring Washer		S N B	Cap Square Neck Bolt	
P W	Plain Washer		S W	Spring Lock Washer	

No.	Parts No.	Description	No.	Parts No.	Description	No.	Parts No.	Description
901	0037-103006	PMS-S, M3x6	967	0141-105020	FMS, M5x20	1033	0291-106010	HBB, M6x10
902	0037-103010	PMS-S, M3x10	968	0141-105040	FMS, M5x40	1034	0311-030605	PW, M3 (Little)
903	0037-103018	PMS-S, M3x18	969	0141-105045	FMS, M5x45	1035	0311-030805	PW, M3
904	0111-104006	HBS, M4x6	970	0142-003006	FMS, M3x6 (SUS)	1036	0311-040808	PW, M4 (Little)
905	0111-104008	HBS, M4x8	971	0142-003008	FMS, M3x8 (SUS)	1037	0311-041008	PW, M4
906	0111-104010	HBS, M4x10	972	0142-003010	FMS, M3x10 (SUS)	1038	0311-041316	PW, M4 (OD13x1.6)
907	0111-104012	HBS, M4x12	973	0142-004006	FMS, M4x6 (SUS)	1039	0311-051208	PW, M5
908	0111-104015	HBS, M4x15	974	0142-004008	FMS, M4x8 (SUS)	1040	0311-061310	PW, M6
909	0111-104020	HBS, M4x20	975	0142-005010	FMS, M5x10 (SUS)	1041	0311-062016	PW, M6 (ID6xOD20x1.6)
910	0111-104025	HBS, M4x32	976	0142-005020	FMS, M5x20 (SUS)	1042	0311-101816	PW, M10
911	0111-104030	HBS, M4x30	977	0151-104008	TMS, M4x8	1043	0312-040808	PW, M4 (Little) (SUS)
912	0111-104035	HBS, M4x35	978	0151-104010	TMS, M4x10	1044	0312-041008	PW, M4 (SUS)
913	0111-105006	HBS, M5x6	979	0151-104012	TMS, M4x12	1045	0312-041316	PW, M4 (OD13x1.6) (SUS)
914	0111-105008	HBS, M5x8	980	0151-105005	TMS, M5x5	1046	0321-025206	SW, M2.5
915	0111-105010	HBS, M5x10	981	0151-105008	TMS, M5x8	1047	0321-030805	SW, M3
916	0111-105012	HBS, M5x12	982	0151-105010	TMS, M5x10	1048	0321-040810	SW, M4
917	0111-105015	HBS, M5x15	983	0151-106015	TMS, M6x15	1049	0321-051208	SW, M5
918	0111-105016	HBS, M5x16	984	0151-604010	TMS, M4x10 (Black)	1050	0321-061215	SW, M6
919	0111-105018	HBS, M5x18	985	0152-004008	TMS, M4x8 (SUS)	1051	0321-081520	SW, M8
920	0111-105020	HBS, M5x20	986	0152-005005	TMS, M5x5 (SUS)	1052	0321-101825	SW, M10
921	0111-105030	HBS, M5x30	987	0152-005010	TMS, M5x10 (SUS)	1053	0322-030607	SW, M3 (SUS)
922	0111-105035	HBS, M5x35	988	0161-102510	PMS, M2.5x10	1054	0322-040810	SW, M4 (SUS)
923	0111-105040	HBS, M5x40	989	0161-102516	PMS, M2.5x16	1055	0341-212825	Wave Washer, BWW-6001
924	0111-105045	HBS, M5x45	990	0161-103006	PMS, M3x6	1056	0411-304020	Spring Pin, $\phi$ 4x20 (19.5)
925	0111-105055	HBS, M5x55	991	0161-103008	PMS, M3x8	1057	0411-303010	Spring Pin, $\phi$ 3x10
926	0111-105070	HBS, M5x70	992	0161-103010	PMS, M3x10	1058	0411-303015	Spring Pin, $\phi$ 3x15
927	0111-106008	HBS, M6x8	993	0161-103015	PMS, M3x15	1059	0411-304014	Spring Pin, $\phi$ 4x14
928	0111-106010	HBS, M6x10	994	0161-103016	PMS, M3x16	1060	0411-304022	Spring Pin, $\phi$ 4x22
929	0111-106015	HBS, M6x15	995	0161-103018	PMS, M3x18	1061	0411-305014	Spring Pin, $\phi$ 5x14
930	0111-106016	HBS, M6x16	996	0161-103050	PMS, M3x50	1062	0411-305016	Spring Pin, $\phi$ 5x16
931	0111-106020	HBS, M6x20	997	0161-103506	PMS, M3.5x6	1063	0411-305022	Spring Pin, $\phi$ 5x22
932	0111-106022	HBS, M6x22	998	0161-104004	PMS, M4x4	1064	0411-305025	Spring Pin, $\phi$ 5x25
933	0111-106025	HBS, M6x25	999	0161-104005	PMS, M4x5	1065	0411-306012	Spring Pin, $\phi$ 6x12
934	0111-106030	HBS, M6x30	1000	0161-104006	PMS, M4x6	1066	0411-306020	Spring Pin, $\phi$ 6x20
935	0111-106035	HBS, M6x35	1001	0161-104008	PMS, M4x8	1067	0411-306022	Spring Pin, $\phi$ 6x22
936	0111-106040	HBS, M6x40	1002	0161-104010	PMS, M4x10	1068	0411-306050	Spring Pin, $\phi$ 6x50
937	0111-106055	HBS, M6x55	1003	0161-104015	PMS, M4x15	1069	0412-003010	Spring Pin, $\phi$ 3x10 (SUS)
938	0111-108015	HBS, M8x15	1004	0161-104018	PMS, M4x18	1070	0412-004014	Spring Pin, $\phi$ 4x14 (SUS)
939	0111-108020	HBS, M8x20	1005	0161-105012	PMS, M5x12	1071	0422-004020	Rivet, $\phi$ 4x20 (SUS)
940	0111-108070	HBS, M8x70	1006	0161-105015	PMS, M5x15	1072	0422-006025	Rivet, $\phi$ 6x25 (SUS)
941	0111-110015	HBS, M10x15	1007	0161-105040	PMS, M5x40	1073	0421-106025	Rivet, $\phi$ 6x25
942	0112-004006	HBS, M4x6 (SUS)	1008	0161-106006	PMS, M6x6	1074	0421-106030	Rivet, $\phi$ 6x30
943	0112-004012	HBS, M4x12 (SUS)	1009	0161-106010	PMS, M6x10	1075	0421-106090	Rivet, $\phi$ 6x90
944	0121-104004	HSS, M4x4	1010	0161-106040	PMS, M6x40	1076	0511-110306	Stop Ring, E-3
945	0121-104005	HSS, M4x5 (SUS)	1011	0161-106060	PMS, M6x60	1077	0511-110406	Stop Ring, E-4
946	0121-104006	HSS, M4x6	1012	0164-504008	PMS, M4x8 (B&I)	1078	0511-110506	Stop Ring, E-5
947	0121-105005	HSS, M5x5	1013	0162-002503	PMS, M2.5x3 (SUS)	1079	0511-110608	Stop Ring, E-6
948	0121-105006	HSS, M5x6	1014	0162-003006	PMS, M3x6 (SUS)	1080	0511-110808	Stop Ring, E-8
949	0121-105010	HSS, M5x10	1015	0162-003010	PMS, M3x10 (SUS)	1081	0511-111010	Stop Ring, E-10
950	0121-106005	HSS, M6x5	1016	0162-003506	PMS, M3.5x6 (SUS)	1082	0511-111210	Stop Ring, E-12
951	0121-106010	HSS, M6x10	1017	0162-004008	PMS, M4x8 (SUS)	1083	0511-111516	Stop Ring, E-15
952	0121-108015	HSS, M8x15	1018	0162-004018	PMS, M4x18 (SUS)	1084	0511-111916	Stop Ring, E-19
953	0122-004004	HSS, M4x4 (SUS)	1019	0181-103001	HN, M3	1085	0511-121910	Stop Ring, H-19
954	0122-004005	HSS, M4x5 (SUS)	1020	0181-104001	HN, M4	1086	0511-130808	Stop Ring, S-8
955	0131-104008	HB, M4x8	1021	0181-105001	HN, M5	1087	0511-131010	Stop Ring, S-10
956	0131-106008	HB, M6x8	1022	0181-106001	HN, M6	1088	0511-131210	Stop Ring, S-12
957	0131-106150	HB, M6x150	1023	0181-106003	HN, M6 (Thin)	1089	0511-132212	Stop Ring, S-22
958	0141-103004	FMS, M3x4	1024	0181-108003	HN, M8 (Thin)	1090	0511-132510	Stop Ring, S-25
959	0141-103006	FMS, M3x6	1025	0181-110001	HN, M10	1091	0511-210400	Push Nut, 4
960	0141-103008	FMS, M3x8	1026	0181-116003	HN, M16 (Thin)	1092	0511-210600	Push Nut, 6
961	0141-104006	FMS, M4x6	1027	0182-003001	HN, M3 (SUS)	1093	0512-210400	Push Nut, 4 (SUS)
962	0141-104008	FMS, M4x8	1028	0182-005001	HN, M5 (SUS)	1094	0512-210600	Push Nut, 6 (SUS)
963	0141-105008	FMS, M5x8	1029	0251-105020	HPS, M5x20	1095	0331-040801	Teethed Lock Washer M4
964	0141-105010	FMS, M5x10	1030	0271-105012	SNB, M5x12	1096	0422-004016	Rivet, $\phi$ 4x16 (SUS)
965	0141-105015	FMS, M5x15	1031	0290-504163	Set Screw, $\phi$ 4.5x8	1097	0422-005016	Rivet, $\phi$ 5x16 (SUS)
966	0141-105018	FMS, M5x18	1032	0291-105010	HBB, M5x10	1098	0512-210500	Push Nut, 5 (SUS)



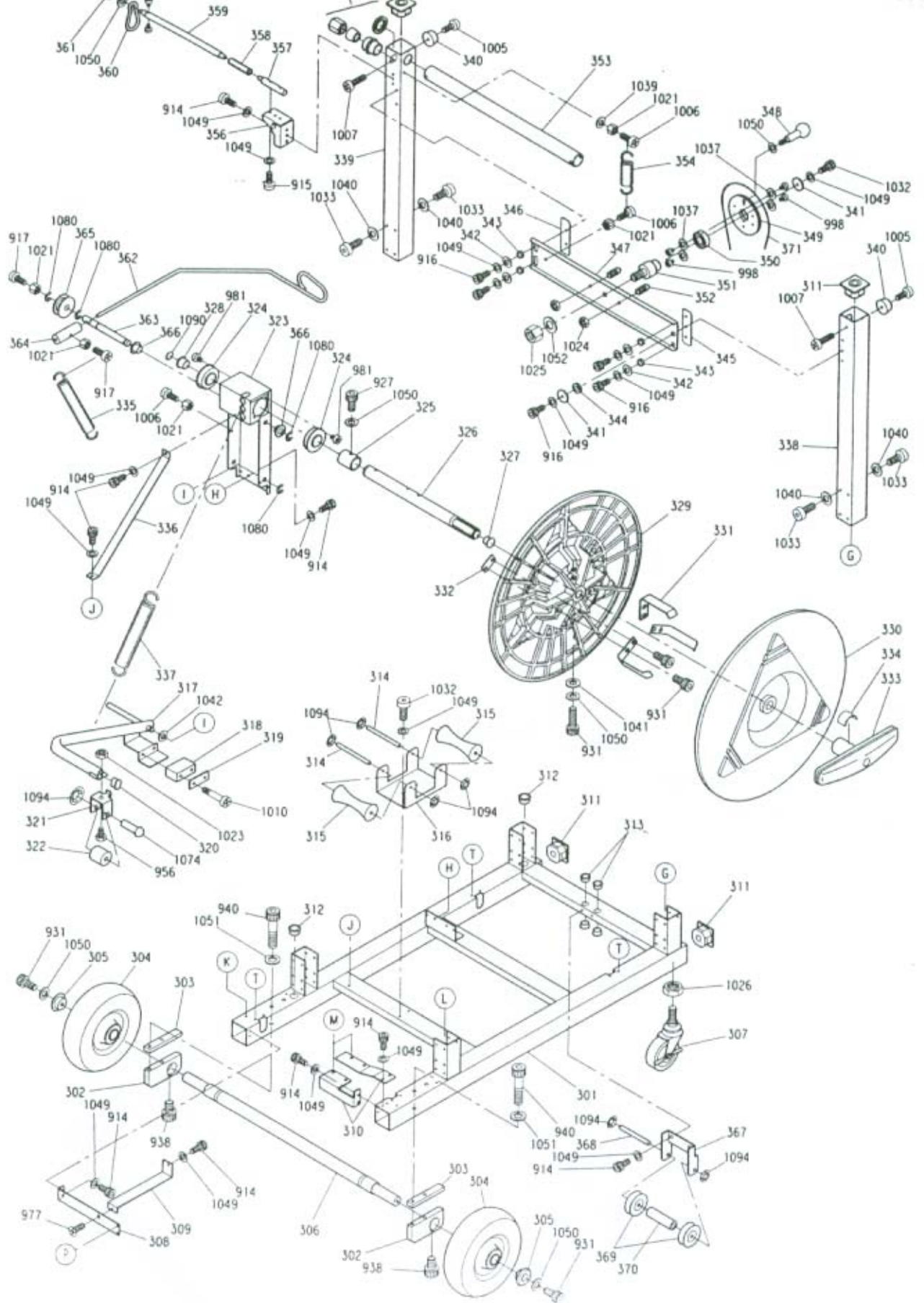
No.	Parts No.	Description	Q'ty	Note
1	615-01-10111	Left Block Cam	1	
2	615-01-10121	Heater Cam	1	
3	615-01-10131	Center Block Cam	1	
4	615-01-10141	Band Guide Cam	1	
5	615-01-10151	Right Block Cam	1	
6	631-01-10140	Cam Shaft	1	
7	615-01-10171	Collar (A)	1	
8	615-01-10180	Collar (B)	3	
9	615-01-10211	End Plate	2	
10	631-01-10310	Key : 5x5x73	1	
13	631-01-10110	Limit Switch Cam	1	
14	615-01-10260	Collar (E)	1	
18	615-01-20150	Arm Spring	2	
19	615-01-20140	Arm Shaft	1	
23	615-01-22110	Band Guide	1	
24	615-01-22120	Striker	1	
25	615-01-22160	Striker Pin Collar	1	
26	615-01-23110	Band Guide Arm	1	
27	631-25-13340	Left Bandway Bracket :PLT	1	
28	615-01-30150	Spacer	1	
29	615-01-30110	Block Tension Spring	3	
30	631-01-30140	Cutter Tension Spring	2	
31	615-01-30140	Spring Hook Pin	1	
32	615-01-31112	Right Block	1	
33	615-01-31131	Cam Follower Holder	3	
34	660-01-31120	Right Block Spring	1	
35	615-01-31140	Spring Hook (A)	2	
36	631-01-31110	Spring Hook (D)	1	
37	615-01-32112	Center Block	1	
38	615-01-32120	Spring Hook (B)	2	
39	631-01-32110	Spring Hook (E)	1	
40	660-01-32120	Left & Center Block Spring	2	
41	615-01-33113	Left Block	1	
42	615-01-34110	Block Case	1	
45	631-25-12170	Heater Slider Base :PLT	1	

No.	Parts No.	Description	Q'ty	Note
47	615-01-40140	Heater Slider Base Stud	2	
48	615-01-40150	Heater Tension Spring	1	
49	631-80-10340	Heater : EX	1	EX
	615-01-41110	Heater		J.Spec
50	615-01-41120	Heater Base	1	
51	615-01-41130	Heater Cord Protector	1	
52	615-01-42110	Heater Arm	1	
53	615-01-42120	Heater Guide	1	
54	631-25-12150	Sealing Unit Frame (L) :PLT	1	
55	615-01-50121	Sealing Unit Frame (R)	1	
56	631-01-50120	LS-3,4 Bracket	1	
57	615-01-50160	Spring Hook (C)	1	
88	0750--110045	Micro Switch, D2RV	1	LS-1
92	631-06-10160	LS Number Seal	1	
93	0520--112025	Metal Bushing, MB2025DU	6	
95	0611--020635	Ball Bearing,635z2	5	
98	0611--060001	Ball Bearing,60/22zz	2	
99	0890--480257	Warning Label : High Temperature	1	EX
	0890--480082	Warning Label : High Temperature		J.Spec
104	631-01-10150	Cam Shaft Gear	1	
105	631-01-10160	Key (B)	1	
108	631-01-10190	Second Gear	1	
109	0611--020608	Ball Bearing,608z2	2	
132	0750--110098	Micro Switch, ABS111654	2	LS-3,4
133	631-01-30220	Lower Band Guide	1	
144	636-01-10310	Support Collar : S	1	
147A	631-25-14830	Right Band Guide,15.5mm :PLT		
	631-25-14840	Right Band Guide,12mm :PLT	1	
147B	631-25-15550	Right Band Guide		
148	631-25-12160	Heater Slider Base Support :PLT	1	
194	615-01-31002	Right Block Assembly	(1)	
195	615-01-32002	Center Block Assembly	(1)	
196	615-01-33002	Left Block Ass'y	(1)	
197	631-80-10400	Heater Assembly : EX	(1)	EX
	615-01-41000	Heater Assembly		J.Spec



## SEALING UNIT-②

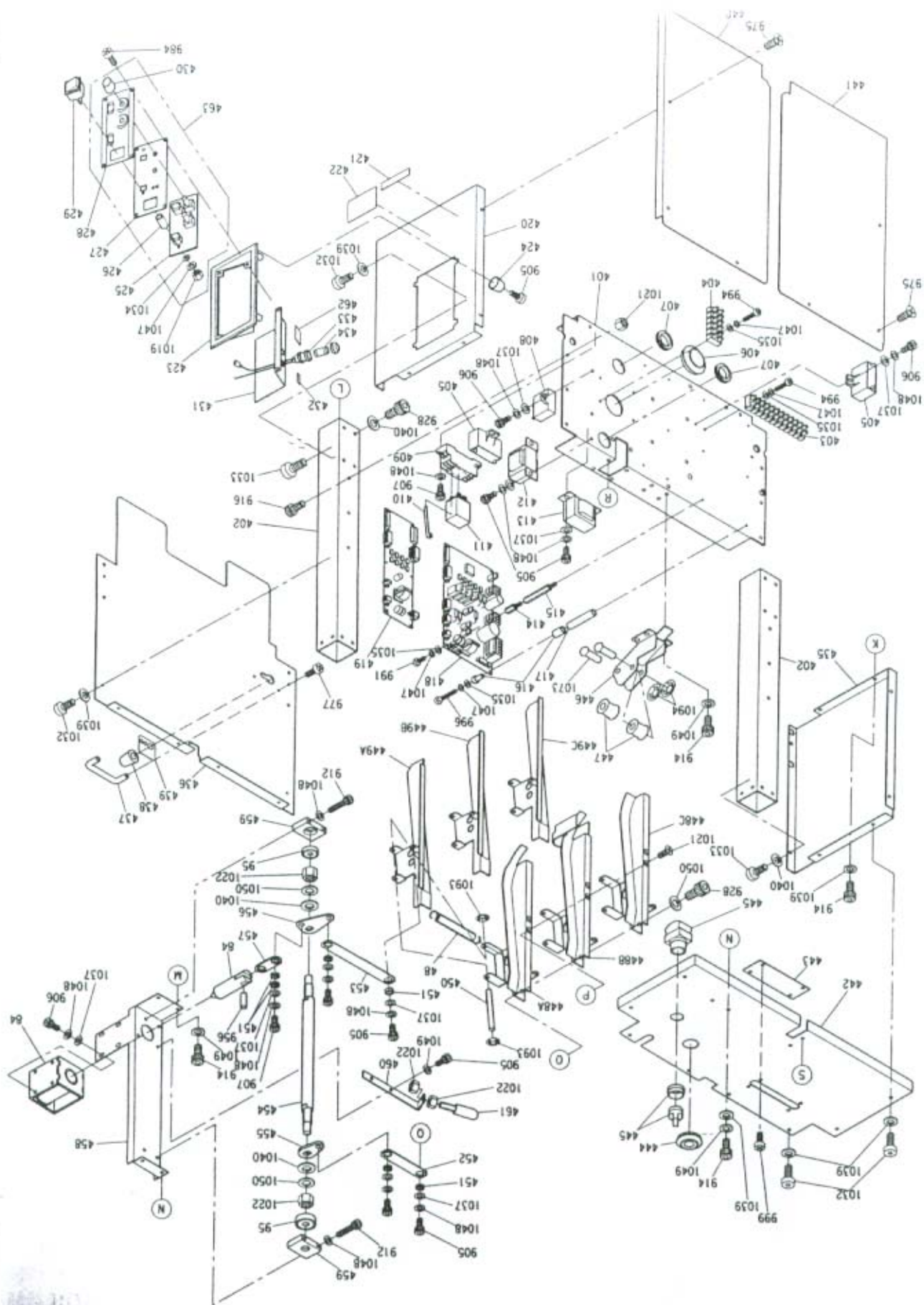
No.	Parts No.	Description	Q'ty	Note	No.	Parts No.	Description	Q'ty	Note
15	615-01-20110	Guide Rail (L)	1		111	631-01-70310	Feed Roller Collar	1	
16	615-01-20120	Guide Rail (R)	1		112	631-01-70290	Key (C)	1	
17	615-01-20130	Slide Table Spring	2		114	631-06-23310	Magnetic Brake :Coil	2	
20	615-01-21110	Slide Table	1		115	631-06-23290	Hub & Armature for Brake	2	
21	615-01-21120	Slide Table Stopper	1		116	631-06-23390	Seal, M1 Motor	1	CE
22	615-01-21130	Left Block Band Guide	1		117	631-06-23470	Seal, M2 Motor 100W D type	1	CE
48	615-01-40150	Heater Tension Spring	1		118	631-06-23430	Seal, Magnetic Brake	1	CE
58	631-25-03270	F.R. Base :PLT	1		119	631-06-23420	Seal, Solenoid	1	CE
59	631-01-70490	Feed Roller	1		120	631-81-10320	Earth Leakage Wire (A) :CE	2	CE
62	631-25-03280	Base Cover :PLT	1		121	631-81-10340	Earth Leakage Wire (C) :CE	1	CE
63	615-01-70161	Feed Shooter Lower Plate	1		122	631-01-70470	Touch Spring	1	
64	615-01-70170	Feed Shooter Guide	1		123	631-01-70430	Gear Cover A	1	
65	615-01-70180	Feed Shooter Upper Plate	1		124	0611-026002	Ball Bearing,6002zz	1	
69	631-25-13440	Upper Shooter Spring :PLT	1		128	631-25-11490	Feed Gear :HT	1	
73	631-25-12190	LS-5 Bracket	1		129	631-25-12200	Upper Shooter Shaft	1	
74	631-01-70510	Upper Roller	1		130	631-01-70480	End Plate (B)	1	
75	615-01-71120	Upper Roller Shaft	1		134	631-25-11450	Feed Gear Case :HT	1	
76	615-01-71133	Upper Roller Shaft Holder	1		136	631-25-11560	Gear Box Collar :HT	1	
77	631-01-70161	Upper Roller Shaft Arm	1		137	631-25-11540	Feed Gear (B) :HT	1	
79	631-25-12830	Upper Shooter :PLT	1		138	631-25-12120	Key,6x6x16 :HT	1	
80	631-25-11661	Right Bandway,15.5mm :PLT	1		139	631-25-11470	M2 Motor Flange :HT	1	
	631-25-13400	Right Bandway,12mm :PLT							
84	631-80-10350	Solenoid (DC90V) :EX	1	EX	141	631-25-11520	Feed Roller Shaft :HT	1	
	631-06-23700	Solenoid (DC90V)		J.Spec					
85	631-80-10380	Sealing Motor :M1 :EX	1	EX	142	0810-250008	Square Gear : S1.5S 40A=1618	1	
	631-81-10400	Sealing Motor :M1 :EX-CE		CE					
	631-06-23100	Sealing Motor :M1		J.Spec					
86	631-80-10311	Feed Motor :M2 :100C3:EX	1	EX	145A	631-25-11651	Right Bandway Flap,15.5mm :PLT	1	
	631-81-10301	Feed Motor :M2:100D:EX-CE		CE					
	631-06-23200	Feed Motor :M2:100C3		J.Spec					
90	0750-130020	Lead Switch, RS-803NO	1	LS-5	145B	631-25-11652	Right Bandway Flap,15.5mm :PLT	1	
91	0750-130004	Magnet, MFT-2021	1			631-25-13391	Right Bandway Flap,12mm :PLT		
92	631-06-10160	LS Number Seal	1		145C	636-01-10480	Right Flap Hinge : DS30	1	
94	0520-140606	Bush, 80F0606FDU	2		149	631-25-03290	Right Bandway Shaft :PLT	1	
96	0611-021980	Ball Bearing,R1980zz	2		150	631-25-13460	Support Bolt :HT	1	
97	0611-026001	Ball Bearing,6001zz	5		151	684-01-70280	Plunger Guide :D=53M	1	
106	631-01-10130	M1 Gear Case	1		152	631-25-11550	Gear Box Packing :HT	1	
107	631-01-10170	Packing(A)	1		198	631-06-23500	Magnetic Brake :MB1:EX	(1)	J.Spec
						631-80-10360	Magnetic Brake :MB1:EX		EX
					199	631-06-23600	Magnetic Brake :MB2:EX	(1)	J.Spec
						631-80-10370	Magnetic Brake :MB2:EX		EX



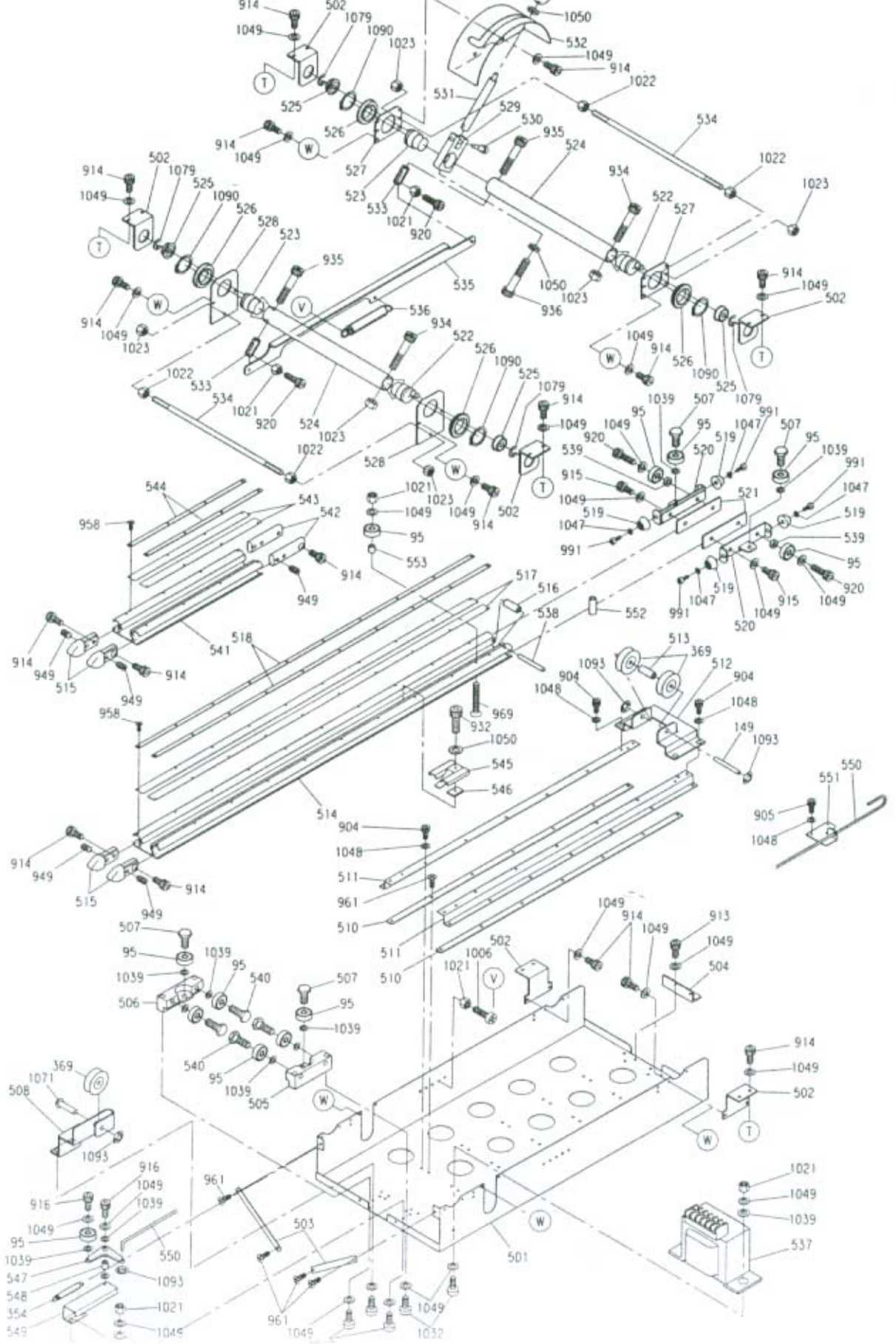


**BODY & REEL UNIT - ①**

No.	Parts No.	Description	Q'ty	Note	No.	Parts No.	Description	Q'ty	Note
301	631-25-12740	Frame Base :PLT	1		339	631-25-12750	Handle Support R :PLT	1	EX:64287~
302	631-25-12910	Wheel Bracket :PLT	2			631-25-12751	Handle Support R :PLT		
303	631-25-13500	Wheel Bracket Spacer :PLT	2		340	0890-180017	Rubber Foot,C-30-RK-3215	2	
304	0691-140011	Airless Wheel,8x3.00-4HL	2		341	631-01-70480	End Plate (B)	2	
305	631-25-13850	Wheel Shaft End Plate :PLT	2		342	631-25-14710	Washer,M5 (d=5.1)	4	
306	631-25-12920	Wheel Shaft :PLT	1		343	631-25-13980	Rope Handle Bracket Collar B :PLT	4	
307	0890-130290	Caster,415EA-UB85	2		344	631-25-13970	Rope Handle Bracket Collar A :PLT	1	
308	631-25-12520	Left Bandway Bracket :PLT	1		345	631-25-14720	Teflon Sheet A :PLT	1	
309	631-25-14590	Left Bandway Bracket Support :PLT	1		346	631-25-14730	Teflon Sheet B :PLT	1	
310	631-25-12530	Solenoid Bracket Stay :PLT	1		347	631-25-12960	Rope Handle Bracket :PLT	1	
	631-25-12531	Solenoid Bracket Stay :PLT							
311	674-04-10141	Upper Support	4		349	631-25-13180	Rope Handle :PLT	1	t8mm
312	0691-150015	One-Touch Bush,NB-15	2			631-25-13181	Rope Handle :PLT		t10mm
313	0691-150018	One-Touch Bush,NB-11	4		350	0611-026001	Ball Bearing,6001zz	1	t8mm
314	633-04-21150	Reel Guide Roller Shaft, φ 6x95	2			0611-026201	Ball Bearing,6201zz		t10mm
315	600-04-30110	Reel Guide Roller	2		351	631-25-13160	Handle Shaft :PLT	1	t8mm
316	631-25-12690	Reel Guide Roller Bracket :PLT	1			631-25-13160	Handle Shaft :PLT		t10mm
317	631-25-13530	Reel Brake Arm :PLT	1		352	0291-108188	Mini Ball Plunger,PNF-8:NBK	2	
318	631-04-21122	Brake Liner	1		353	631-25-12710	Pipe Pull :PLT	1	
319	633-04-10180	Washer for Brake Liner	1		354	664-01-80140	Action Bar Spring	1	
320	631-04-21190	Cap for Brake Arm	1		355	0740-120148	Cord Connector,TSA-1ML	1	
321	633-04-21120	Free Angle Roller Bracket	1		356	0890-530032	Table Stay,B-1847-L	1	
322	631-04-10290	Band Guide Roller	1		357	631-25-13480	Power Supply Cord Support A :PLT	1	
323	631-25-13550	Reel Bracket :PLT	1		358	631-25-13470	Cord Support Spring :PLT	1	
324	0611-060016	Ball Bearing,CBB-2552	2		359	631-25-13410	Power Supply Cord Support B :PLT	1	
325	631-04-10211	Reel Shaft Pipe	1		360	0890-530040	Spring Hook,BX-674	1	
326	631-04-10131	Reel Shaft	1		361	0890-190095	Ball Knob,PC30xM6	1	
327	631-04-10340	Reel Shaft Cap :F	1		362	631-25-13190	Band Regulator :PLT	1	
328	631-04-10330	Reel Shaft Cap :R	1		363	631-25-13200	Band Regulator Shaft :PLT	1	
329	631-04-10180	Reel In Circular	1		364	631-25-13220	Spring Hook :PLT	1	
330	631-04-10190	Reel Out Circular	1		365	631-25-13210	Spring Guide :PLT	1	
331	631-04-10280	Reel Center Guide	3		366	0520-151010	Bush, 80F-1010	2	
332	125-04-10210	Rear Nut	3		367	631-25-13490	Pulley Bracket C :PLT	1	
333	631-04-10170	Reel Nut Handle	1		368	631-25-14610	Pulley Shaft C :PLT	1	
334	0890-480161	Arrow Label for Nut Handle : E	1		369	631-25-14110	Sheave, φ 30	2	
	0890-480162	Arrow Label for Nut Handle : J							
335	631-25-13560	Band Regulator Spring	1		371	631-25-12330	Pulley Shaft Collar C :PLT	1	
336	631-04-10142	Reel Support	1			631-25-15110	Band Guide Wire :PLT	1	J.Spec
337	660-04-20140	Reel Brake Spring	1			631-25-15120	Band Guide Wire :PLT-EX	1	EX
338	631-25-12760	Handle Support F :PLT	1		631-25-15121	Band Guide Wire :PLT-EX		EX:64287~	
	631-25-12761	Handle Support F :PLT		EX:64287~					

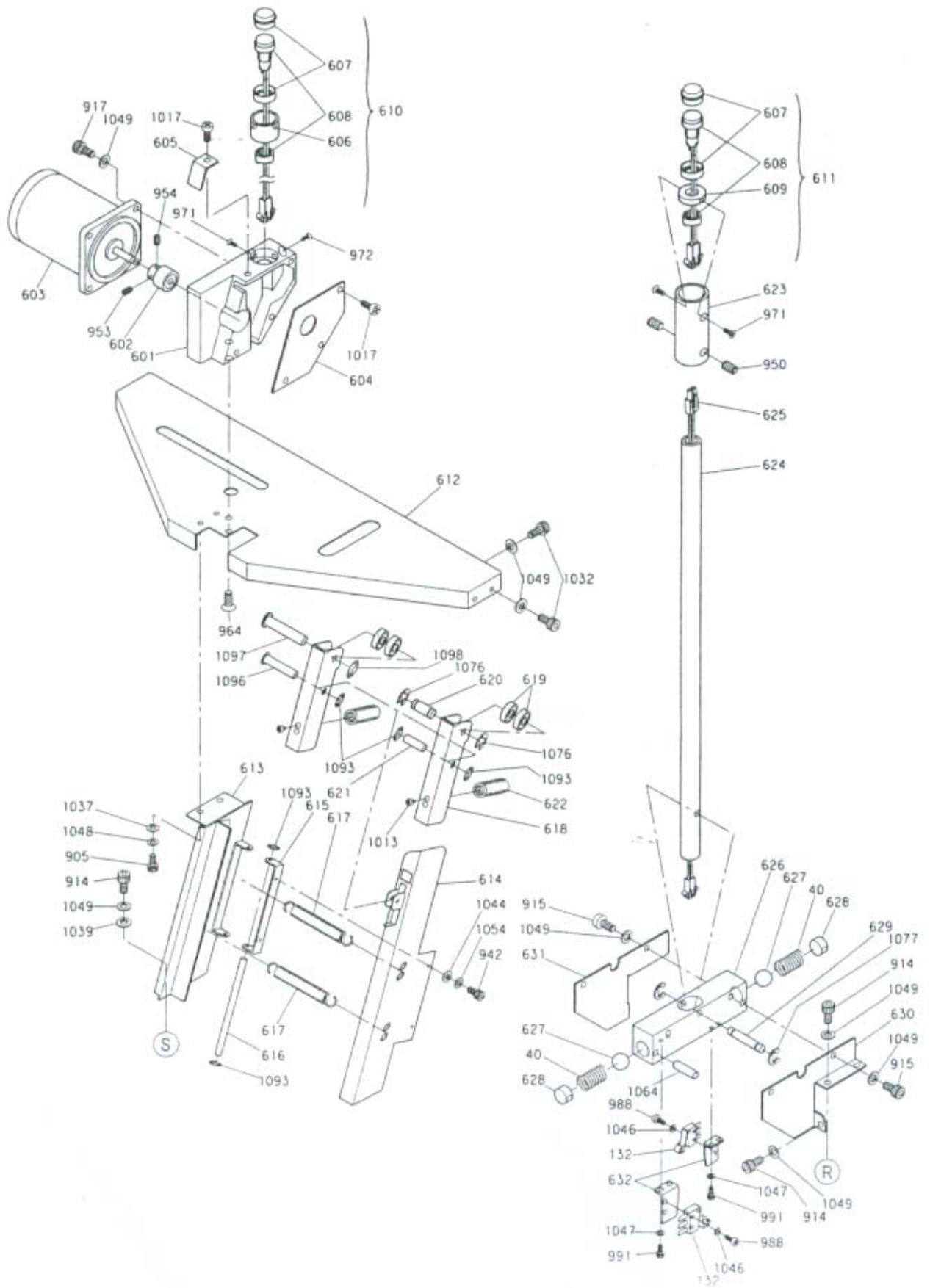


No.	Parts No.	Description	Q'ty	Note	No.	Parts No.	Description	Q'ty	Note	
48	615-01-40150	Heater Tension Spring	1							
84	631-80-10350	Solenoid (DC90V): EX	1	EX	433	631-25-14260	Harness,Fuse Holder : A : PLT	1	EX	
	631-06-23700	Solenoid (DC90V)		J. Spec		631-25-15540	Harness,Fuse Holder : B : PLT	1	EX	
95	0611-020635	Ball Bearing,635zz	2				631-06-21171	Harness, Fuse Holder :E	1	J. Spec
401	631-25-12620	Sealing Unit Base :PLT	1		434	0730-150025	Fuse,5.2x20(4A)	2	200-240V	
402	631-25-12770	Body Support :PLT	2				0730-150015	Fuse,5.2x20(8A)	1	100-120V
403	0740-111253	Terminal, ML-150L : 12P	1	EX	435	631-25-11891	Rear Panel :PLT	1		
404	631-80-10320	Terminal, ML-150L : 6P	1	EX	436	631-25-11931	Right Panel :PLT	1		
405	0770-240027	Condenser for M1,30 $\mu$ Fx200V AC	1		437	0890-190093	Round Bar Pull,A-1042-C-8	1		
406	0890-220014	Grommet,C-30-GS-42A	1		438	0710-180004	Knob, K-8075	1		
407	0890-220029	Grommet,C-30-NG-79Q	2		439	631-80-10611	Seal, Heater : EX	1	EX	
408	0770-240032	Condenser,250V 4 $\mu$ F	1	100V			631-06-10411		Seal, Heater	J. Spec
	0770-240012	Condenser,400V 3 $\mu$ F		120V		440	631-25-12810	Side Table F :PLT	1	
	0770-240006	Condenser,450V 0.8 $\mu$ F		200-240V		441	631-25-12820	Side Table R :PLT	1	
409	0720-180012	Relay Socket,PYF-08A	1		442	631-25-12630	Top Plate :PLT	1		
410	0720-190002	Relay Bracket,PYC-A1	2		443	631-25-13140	Dust Cover B :PLT	1		
411	0720-130063	Relay,MY2-AC12	1		444	631-25-14760	Grommet,D28d10	1		
412	631-25-14340	Transformer,TR-4	1		445	0710-120333	Selector Switch,ASW210	1		
413	631-25-14600	Control Transformer E	1		446	631-25-12062	Guide Roller Bracket :PLT	1		
414	0890-320020	Spacer,3x10 Hexagon	2		447	639-25-00120	Band Guide Roller : Desk Top	1		
415	0890-320029	Spacer,BSB-330	2		448A	631-25-11611	Left Bandway :PLT	1	EX	
416	0740-230003	Spacer	9		448B	631-25-11612	Left Bandway :PLT		J:62972	
417	0890-530039	Tapping Support,PS-430	9		448C	631-25-14910	Left Bandway EX :PLT		EX:64287	
418	631-25-11350	I.C.Board : Manual Tension	1		449A	631-25-11632	Left Bandway Flap :PLT	EX		
419	631-25-12790	I.C.Boad for Solenoid :PLT	1		449B	631-25-11631	Left Bandway Flap :PLT	1	J:62972	
420	631-25-11881	Front Panel :PLT	1		449C	631-25-14920	Left Bandway Flap :PLT-EX	EX:64287		
421	601-05-10210	Emblem : Strapack	2		450	631-25-12130	Left Bandway Shaft :PLT	1		
422	631-05-10560	Seal, D-53	2		451	631-05-10540	Table Roller Collar	6		
423	631-05-10151	Operation Panel Fixing Plate	1		452	631-25-12210	Flap Link A :PLT	1		
424	631-05-10280	Cap	4		453	631-25-12220	Flap Link B :PLT	1		
425	631-06-10142	I.C Board For Operation Panel:D-2	1		454	631-25-11781	Link Shaft :PLT	1		
426	0740-230007	Plastic Support, PS-314	3		455	631-25-11741	Solenoid Link Arm B :PLT	1		
427	631-06-10123	Operation Panel:D-2	1		456	631-25-11751	Solenoid Link Arm A :PLT	1		
428	631-06-10114	Operation Panel Seat:E	1	J. Spec	457	631-25-11721	Solenoid Link :PLT	1		
	631-80-10125	Operation Panel Seat:E:EX		English	458	631-25-11642	Solenoid Bracket :PLT	1		
429	0750-130075	Power Switch, A8A-223-1:250V	1	200-240V	459	631-25-11691	Link Shaft Holder :PLT	2		
	0750-130074	Power Switch, A8A-213-1:125V		100-120V	460	631-25-12140	Flap Cushion Bracket	1		
430	0710-180023	Knob, K-6	2		461	100-02-10110	Flap Cushion	1		
431	631-06-10152	Operation Panel Cover : D-53	1		462	0890-480126	Warning Label : Electric Shock	1	English	
432	631-81-10220	Fuse Label : F1,F2x4A	1	200-240V			0890-480115		Warning Label : Electric Shock	J. Spec
	631-06-10171	Fuse Label		100-120V		463	631-80-10104	Operation Panel Assembly : D-53	(1)	EX



**BODY & BANDWAY UNIT - ③**

No.	Parts No.	Description	Q'ty	Note	No.	Parts No.	Description	Q'ty	Note
95	0611—020635	Ball Bearing,635zz	12		526	0611—056805	Ball Bearing,6805NR	4	EX
149	631-25-03290	Right Bandway Shaft :PLT	1		527	631-25-12930	Base Bracket B :PLT	2	EX
361	0890—190095	Ball Knob,PC30xM6	1		528	631-25-12470	Base Bracket :PLT	2	EX
369	631-25-14110	Sheave, φ 30	3		529	631-25-12400	Handle Hub :PLT	1	EX
501	631-25-12720	Bandway Base :PLT	1		530	0291—316092	Stripper Bolt,M6x20	1	EX
502	631-25-12970	Base Bracket C :PLT	4	J. Spec	531	631-25-12410	Handle :PLT	1	EX
	631-25-12460	Bearing Holder :PLT		EX	532	631-25-12480	Handle Guide :PLT	1	EX
503	631-25-13100	Bandway Base Support :PLT	2		533	631-25-12420	Link Arm :PLT	2	EX
504	631-25-12240	Bandway Stopper :PLT	1		534	631-25-13260	Joint Bolt :PLT	2	EX
505	631-25-12051	Bandway Guide (R) :PLT	1		535	631-25-12440	Link :PLT	1	EX
506	631-25-12041	Bandway Guide (L) :PLT	1		536	631-25-14770	Link Spring :PLT	1	EX
507	631-25-13250	Bandway Bolt :PLT	4		537	0770—160223	Transformer P200-240V : CE	1	CE 200-240V
508	631-25-12950	Pulley Bracket :PLT	1			0770—160099	Transformer 200-240V		200-240V
510	631-25-11981	Rail :PLT	2			0770—160098	Transformer 110-120V		110-120V
511	631-25-11991	Rail Guide :PLT	2		538	631-25-13240	Bandway Pin :PLT	1	
512	631-25-12370	Pulley Bracket :PLT	1		539	631-25-12780	Band Guide Collar :PLT	2	
513	631-25-12320	Pulley Shaft Collar B :PLT	1		540	631-25-14860	Bandway Bolt B :PLT	4	
514	631-25-12091	Bandway :PLT	1	1000mm	541	631-25-14900	Extension Bandway :PLT	1	OP
	631-25-15280	Bandway : PLT : 1200		1200mm	542	631-25-14890	Bandway Joint :PLT	2	OP
515	631-25-12730	Bandway Guard :PLT	2		543	631-25-14930	Extension Bandway Flap Sheet :PLT	2	OP
516	631-25-14130	Bandway Pin Collar	1		544	631-25-14940	Hold Plate of Extension Bandway :PLT	2	OP
517	631-25-14740	Bandway Flap Sheet :PLT	2		545	631-25-14870	Bandway Band Guide :PLT	1	EX
518	631-25-14580	Hold Board of Bandway Flap :PLT	2		546	631-25-14880	Bandway Nut :PLT	1	EX
519	0890—180026	Rubber Foot,C-30-RK-16	4		547	631-25-12281	Stopper Arm A :PLT	1	EX
520	631-25-12031	Bandway Guide (Rear) :PLT	2		548	631-25-12321	Stopper Collar B :PLT	1	EX
521	631-25-11811	Bandway Nut Plate :PLT	2		549	631-25-12341	Stopper Bracket A :PLT	1	EX
522	631-25-12380	Eccentric Shaft R :PLT	2	EX	550	631-25-14980	Stopper Link :PLT	1	EX
523	631-25-12390	Eccentric Shaft L :PLT	2	EX	551	631-25-12351	Stopper Bracket B :PLT	1	EX
524	631-25-12430	Link Shaft :PLT	2	EX	552	631-25-15130	Bandway Inner Collar :PLT	1	EX
525	0611—060052	Ball Bearing,F608zz	4	EX	553	631-25-12311	Stopper Collar A :PLT	1	EX

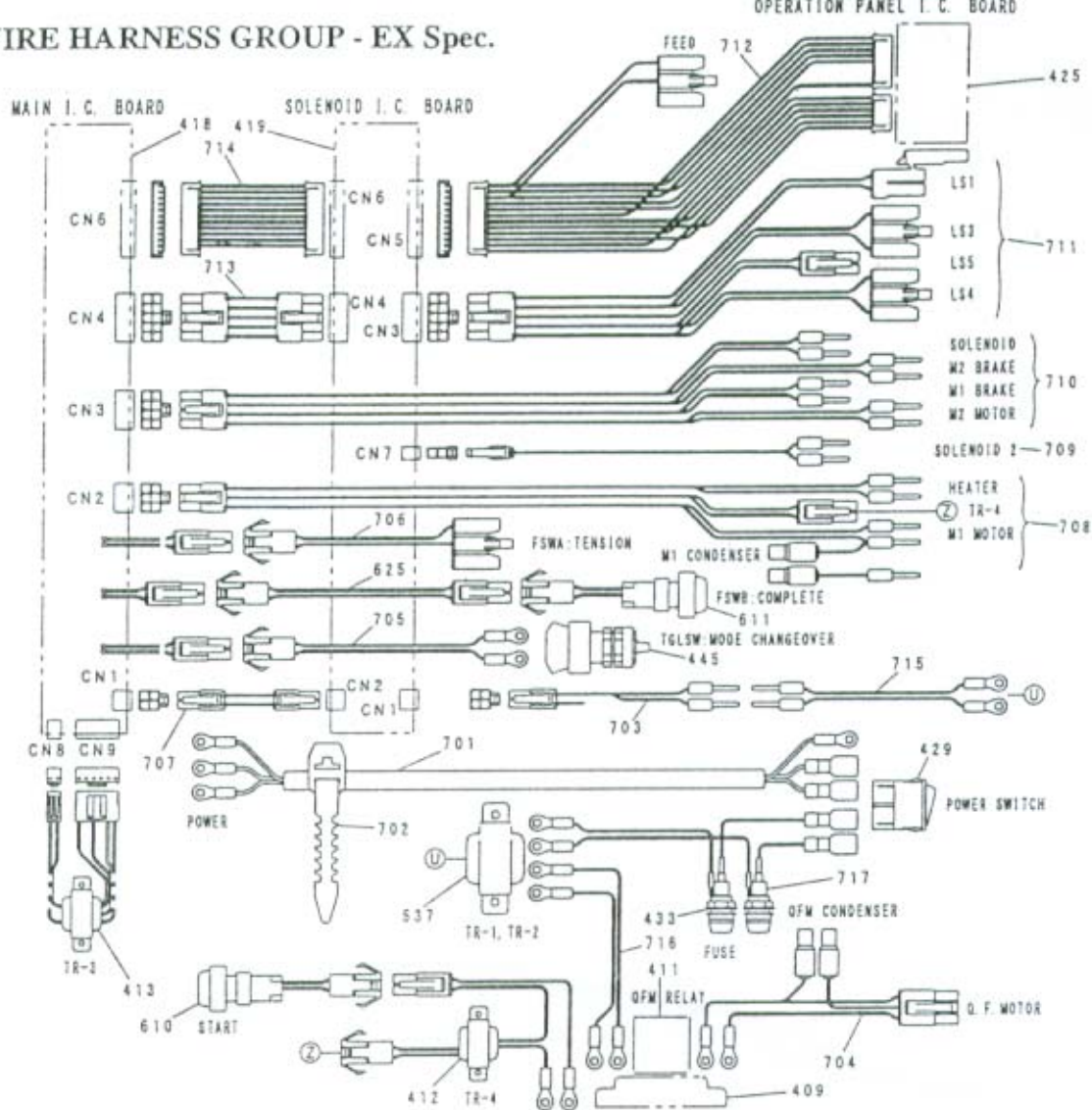


QUICK FEEDER & OPERATION LEVER UNIT

No.	Parts No.	Description	Q'ty	Note
40	660-01-32120	Left & Center Block Spring	2	
132	0750--110098	Micro Switch, ABS111654	2	
601	631-25-12840	Quick Feeder Shooter :PLT	1	
602	663-21-11120	Quick Feeder Roller	1	
603	0780--140020	Motor,M71A15S4G6:220-240V 15W	1	200-240V
	0780--140021	Motor,M71A15S4Y :200V 15W		200V
	0780--140061	Motor,M71A15S4D :100-120V 15W		110-120V
	0780--140018	Motor,M71A15S4L :100V 15W		100V
604	674-07-10181	Flap Support	1	
605	631-25-13230	Quick Feeder Band Guide :PLT	1	
606	631-25-12850	Guard for Start Switch :PLT	1	
607	0740--260004	Push Switch Cover,AL-D2	2	
608	0710--110229	Push Switch,AB2M-M1	2	
609	631-25-12590	Lever Switch Base :PLT	1	
610	631-25-14330	Start Switch	1	
611	631-25-14270	Seal Switch	1	
612	631-25-12640	Quick Feeder Base Plate :PLT	1	
613	631-25-12660	Quick Feeder Bandway :PLT	1	
614	631-25-12671	Quick Feeder Bandway Flap : PLT	1	

No.	Parts No.	Description	Q'ty	Note
615	631-25-13150	Quick Feeder Flap Bracket B :PLT	1	
616	631-25-13270	Quick Feeder Bandway Shaft :PLT	1	
617	631-25-14120	Quick Feeder Flap Spring	2	
618	631-25-13940	Quick Feeder Touch Arm :PLT	1	
619	0611--020695	Ball Bearing,695zz	2	
620	631-25-13950	Quick Feeder Touch Roller Shaft :PLT	1	
621	631-25-13960	Quick Feeder Touch Arm Shaft :PLT	1	
622	615-01-70250	Upper Shooter Spring	1	
623	631-25-12600	Lever Handle :PLT	1	
624	631-25-12610	Lever :PLT	1	
625	631-25-14780	Harness, Seal Switch :PLT	1	
626	631-25-12550	Lever Holder :PLT	1	
627	0890--350003	Steel Ball, φ 15	2	
628	631-25-12570	Spring Stopper :PLT	2	
629	631-25-12580	Lever Holder Shaft :PLT	1	
630	631-25-13110	Lever Holder Bracket F :PLT	1	
631	631-25-13120	Lever Holder Bracket R :PLT	1	
632	631-25-12540	LS-6 Bracket :PLT	2	

# WIRE HARNESS GROUP - EX Spec.



No.	Parts No.	Description	Q'ty	Note
409	0720--180012	Relay Socket, PYF-08A	1	
411	0720--130063	Relay, MY2-AC12	1	
412	631-25-14340	Transformer, TR-4	1	
413	631-25-14600	Control Transformer E	1	
418	631-25-11350	I.C. Board : Manual Tension	1	
419	631-25-12790	I.C. Board for Solenoid .PLT	1	
425	631-06-10142	I.C. Board For Operation Panel: D-2	1	
429	0750--130075	Power Switch, A8A-223-1:250V	1	200-240V
	0750--130074	Power Switch, A8A-213-1:125V	1	100-120V
433	631-25-14260	Harness, Fuse Holder : A : PLT	1	
445	0710--120333	Selector Switch, ASW210	1	
537	0770--160223	Transformer P200-240V : CE	1	CE220-240V
	0770--160099	Transformer 200-240V	1	200-240V
	0770--160098	Transformer 110-120V	1	110-120V
610	631-25-14330	Start Switch	1	
611	631-25-14270	Seal Switch	1	

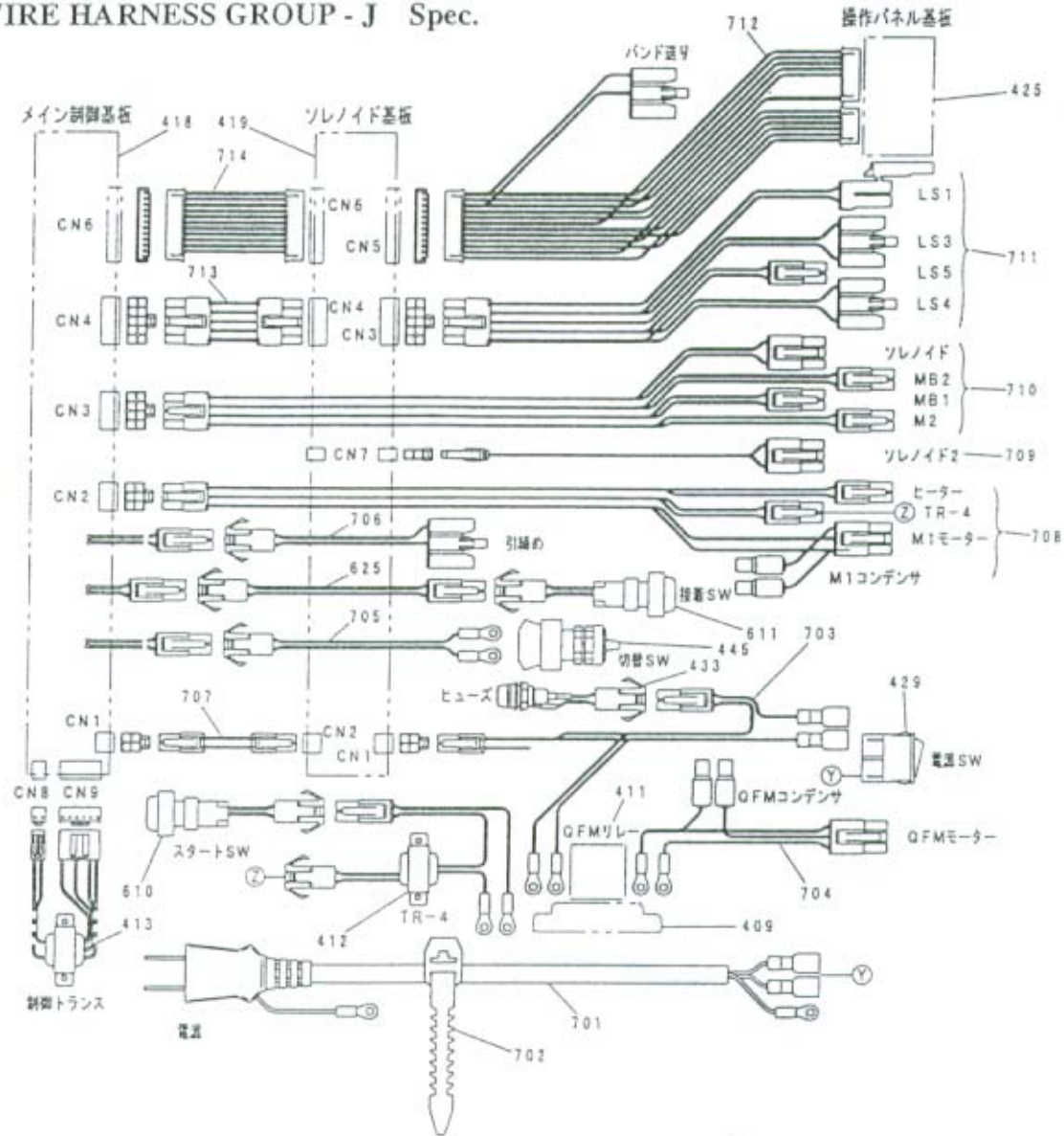
631-25-14780

No.	Parts No.	Description	Q'ty	Note
701	631-25-14640	Power Supply Cord 10m .PLT-EX	1	
702	0740--170003	Cord Band, CB-4	1	
703	631-80-10271	Harness, CON1	1	
704	631-25-14310	Harness, Quick Feeder Motor :PLT	1	
705	631-25-14280	Harness, Changeover Switch :PLT	1	
706	631-25-14250	Harness, Tension :PLT	1	
707	631-25-13360	Harness, CON-1	1	
708	631-25-14650	Harness, CON-2 :PLT-EX	1	
709	631-25-14810	Harness, SOL2 :PLT-EX	1	
710	631-80-10251	Harness, CON3	1	
711	631-06-21131	Harness, CON4	1	
712	631-25-14290	Harness, CON6 :PLT	1	
713	631-25-13370	Harness, CON-4	1	
714	631-25-13380	Harness, CON-6	1	
715	631-80-10530	Harness, Tr/T	1	
716	631-25-14690	Harness, Power :Quick Feeder Motor	1	

631-25-14780



WIRE HARNESS GROUP - J Spec.



No.	Parts No.	Description	Q'ty.	Note
409	0720-180012	Relay Socket, PYF-08A	1	
411	0720-130063	Relay, MY2-AC12	1	
412	631-25-14340	Transformer, TR-4	1	
413	631-25-14600	Control Transformer E	1	
418	631-25-11350	I.C. Board : Manual Tension	1	
419	631-25-12790	I.C. Board for Solenoid :PLT	1	
425	631-06-10142	I.C Board For Operation Panel: D-2	1	
429	0750-130074	Power Switch, A8A-213-1:125V	1	
433	631-06-21171	Harness, Fuse Holder :E	1	
445	0710-120333	Selector Switch, ASW210	1	
610	631-25-14330	Start Switch	1	
611	631-25-14270	Seal Switch	1	
625	631-25-14780	Harness, Seal Switch :PLT	1	
701	615-25-10131	Power Supply Cord 10m	1	

No.	Parts No.	Description	Q'ty.	Note
702	0740-170003	Cord Band, CB-4	1	
703	631-25-14180	Harness, CON1 :PLT	1	
704	631-25-14310	Harness, Quick Feeder Motor :PLT	1	
705	631-25-14280	Harness, Changeover Switch :PLT	1	
706	631-25-14250	Harness, Tension :PLT	1	
707	631-25-13360	Harness, CON-1	1	
708	631-25-14190	Harness, CON2 :PLT	1	
709	631-25-14790	Harness, SOL2 :PLT	1	
710	631-06-21142	Harness, CON3	1	
711	631-06-21131	Harness, CON4	1	
712	631-25-14290	Harness, CON6 :PLT	1	
713	631-25-13370	Harness, CON-4	1	
714	631-25-13380	Harness, CON-6	1	